

# SubConn® Micro Low Profile

## 7 and 9 contacts

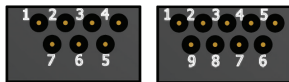
### Connector specifications

Voltage rating	300 V DC/AC rms
Current rating	5 A per contact (max 20 A per connector)
Insulation resistance	> 200 Mohm
Contact resistance	< 0.01 ohm
Wet matings	> 500 (open face rated)
Temperature rating (water)	- 4 to 60°C, 25 to 140°F
Temperature rating (air)	- 40 to 60°C, - 40 to 140°F
Storage temperature rating	- 40 to 60°C, - 40 to 140°F
Qualified pressure tested	800 bar, 11,600 psi
Depth rating PEEK	300 bar, 4,350 psi

### Material specifications

Connector body	Chloroprene rubber
Bulkhead body	Brass, stainless steel, titanium, anodised aluminium or PEEK
Contacts	Female sockets in gold plated brass UNS - C36000 Male pins in gold plated beryllium copper
O-rings	Nitrile
Locking strap	Chloroprene rubber
Inline cable (2 ft, 60 cm)	20 AWG, 0.52 mm <sup>2</sup> synthetic rubber
Bulkhead leads (1 ft, 30 cm)	20 AWG, 0.52 mm <sup>2</sup> coloured PTFE
OM leads (3", 7 cm)	20 AWG, 0.52 mm <sup>2</sup> coloured PTFE

### Face view (male)



### Inline cable colour code

1 Black	3 Red	5 Orange	7 White/black	9 Green/black
2 White	4 Green	6 Blue	8 Red/black*	10 Orange/black**

\* Micro 7 contacts connector uses an 8 conductor cable (only 7 conductors are used)

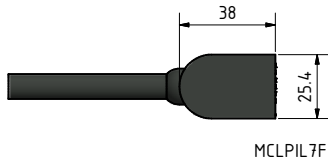
\*\* Micro 9 contacts connector uses a 10 conductor cable (only 9 conductors are used)

### Nominal cable outside diameter (OD)

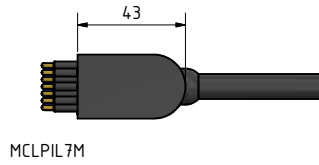
8 conductor cable 0.363", 9.2 mm

10 conductor cable 0.406", 10.3 mm

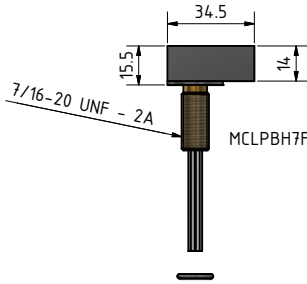
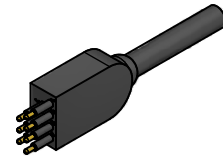
7 and 9 conductor cables are not available, therefore 8 and 10 conductor cables are to be used



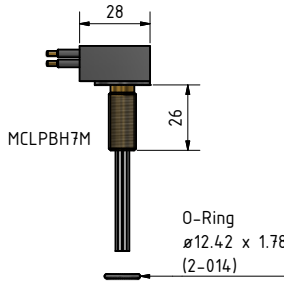
MCLPIL7F



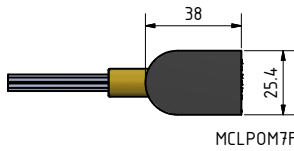
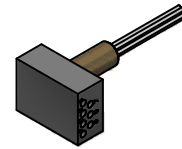
MCLPIL7M



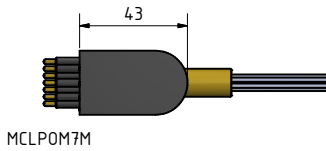
MCLPBH7F



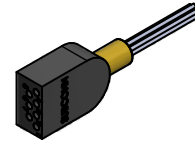
MCLPBH7M



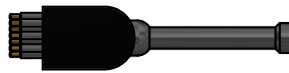
MCLPOM7F



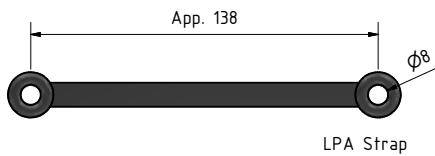
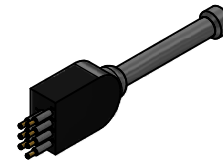
MCLPOM7M



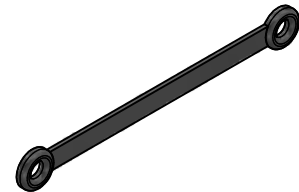
MCLPDC7F



MCLPDC7M



LPA Strap



### Drawing information

Dimensions in mm (1 mm = 0.03937 inch)  
Threads in inches (1 inch = 25.4 mm)