

# SubConn® Low Profile

## 9 contacts

### Connector specifications

Voltage rating	600 V DC/AC rms
Current rating	10 A per contact (max 40 A per connector)
Insulation resistance	> 200 Mohm
Contact resistance	< 0.01 ohm
Wet matings	> 500 (open face rated)
Temperature rating (water)	- 4 to 60°C, 25 to 140°F
Temperature rating (air)	- 40 to 60°C, - 40 to 140°F
Storage temperature rating	- 40 to 60°C, - 40 to 140°F
Qualified pressure tested	800 bar, 11,600 psi
Depth rating PEEK	300 bar, 4,350 psi

### Material specifications

Connector body	Chloroprene rubber
Bulkhead body	Brass, stainless steel, titanium, anodised aluminium or PEEK
Contacts	Gold plated brass UNS - C36000
O-rings	Nitrile
Locking strap	Chloroprene rubber
Inline cable (2 ft, 60 cm)	16 AWG, 1.31 mm <sup>2</sup> synthetic rubber
Bulkhead leads (1 ft, 30 cm)	18 AWG, 0.82 mm <sup>2</sup> coloured PTFE
OM leads (3", 7 cm)	18 AWG, 0.82 mm <sup>2</sup> coloured PTFE

### Face view (male)

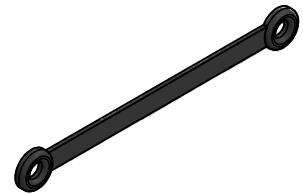
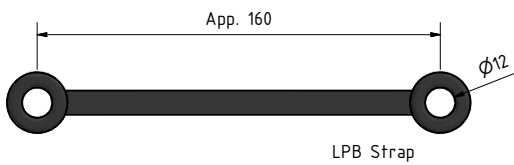
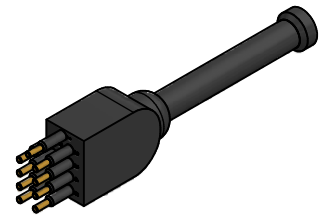
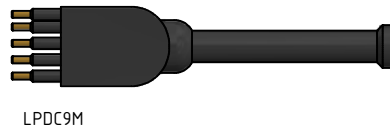
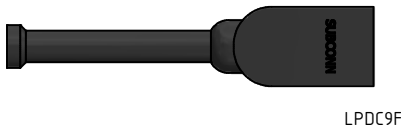
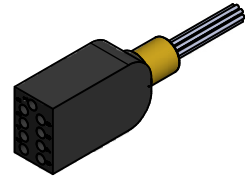
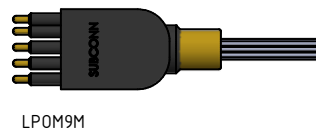
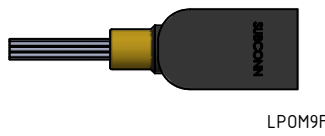
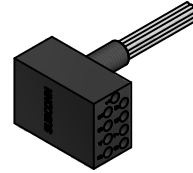
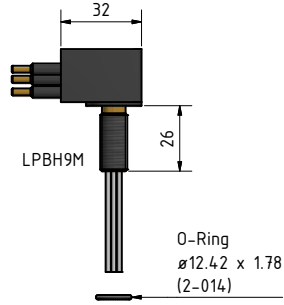
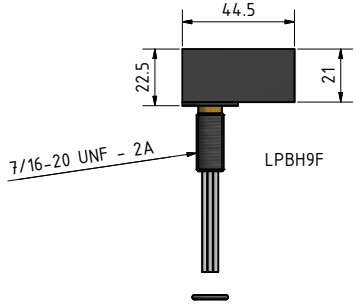
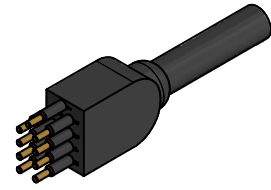
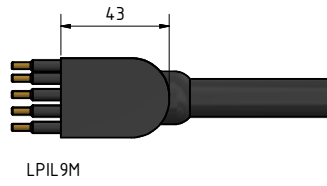
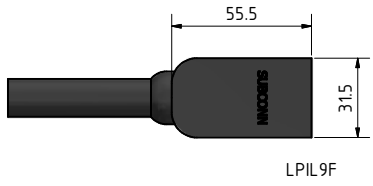


### Inline cable colour code

1 Black	4 Green	7 White/black
2 White	5 Orange	8 Red/black
3 Red	6 Blue	9 Green/black

### Nominal cable outside diameter (OD)

9 conductor cable 0.590", 15.0 mm



**Drawing information**

Dimensions in mm (1 mm = 0.03937 inch)  
Threads in inches (1 inch = 25.4 mm)