

SubConn® Metal Shell 1500

5, 6, 8 and 9 contacts and G2 2, 3 and 4 contacts

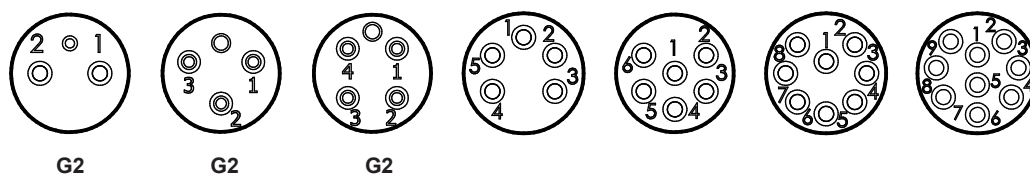
Connector specifications

Voltage rating	300 V DC/AC rms
5, 6, 8 and 9 contacts current rating	5 A per contact (max 20 A per connector)
G2 2, 3 and 4 contacts current rating	5 A per contact (max 20 A per connector)
Insulation resistance	> 200 MΩ
Contact resistance	< 0.01 Ω
Wet matings	> 500
Temperature rating (water)	- 4 to 60°C, 25 to 140°F
Temperature rating (air)	- 40 to 60°C, - 40 to 140°F
Storage temperature rating	- 40 to 60°C, - 40 to 140°F
Qualified pressure tested	1,400 bar, 20,300 psi (mated) 800 bar, 11,600 psi (open face)

Material specifications

Connector body	Chloroprene rubber
Connector housing	Stainless steel AISI 316 (other materials on request)
Contacts	Female sockets in gold plated brass UNS - C36000 Male contacts in gold plated beryllium copper
Location pin	Stainless steel AISI 303
Locking sleeves	ABS or stainless steel
Snap rings	Stainless steel AISI 302
5, 6, 8 and 9 contact bulkhead leads (1 ft, 30 cm)	22 AWG, 0.33 mm² coloured PTFE
G2 2, 3 and 4 contact bulkhead leads (1 ft, 30 cm)	20 AWG, 0.52 mm² coloured PTFE

Face view (male)

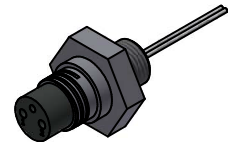
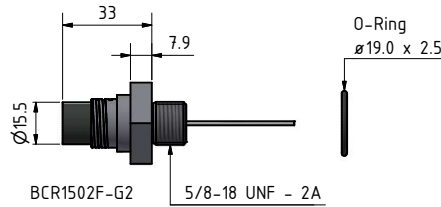
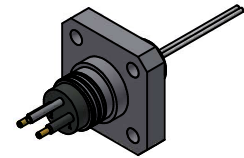
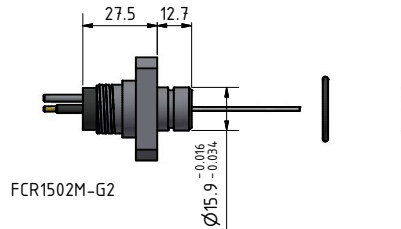
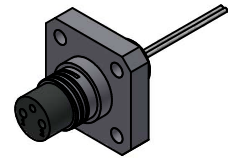
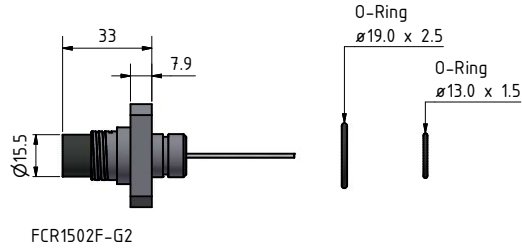


Leads colour code

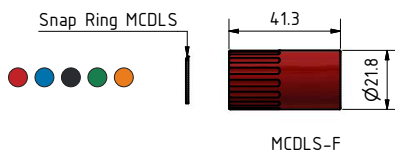
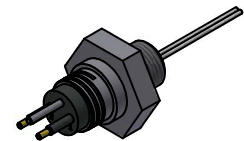
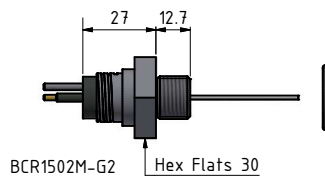
1 Black	4 Green	7 White/black
2 White	5 Orange	8 Red/black
3 Red	6 Blue	9 Green/black



MCIL2F-G2
MCOM2F-G2
MCPB0F2F-G2
MCDL2F-G2



MCIL2M-G2
MCOM2M-G2
MCPB0F2M-G2
MCDL2M-G2



Drawing information

Dimensions in mm (1 mm = 0.03937 inches)
Threads in inches (1 inch = 25.4 mm)