

# SubConn® HF Coax

## 75 ohm Coax

### Connector specifications

Voltage rating on coax insert only	930 V, max nominal voltage acc. to MIL							
Frequency*	0.9 GHz	1.2 GHz	1.5 GHz	1.8 GHz	2.1 GHz	2.4 GHz	2.7 GHz	3.0 GHz
Attenuation*	6.3 dB	7.4 dB	8.6 dB	9.9 dB	11.3 dB	12.8 dB	14.5 dB	15.7 dB
Recommended max frequency	3.0 GHz							
Insulation resistance	> 200 Mohm							
Contact resistance	< 0.01 ohm							
Wet matings	N/A (dry mating only)							
Temperature rating (water)	- 4 to 60°C, 25 to 140°F							
Temperature rating (air)	- 40 to 60°C, - 40 to 140°F							
Storage temperature rating	- 40 to 60°C, - 40 to 140°F							
Qualified pressure tested	600 bar, 8,700 psi							

### Material specifications

Connector body	Chloroprene rubber
Bulkhead body	Brass, stainless steel, titanium or anodised aluminium
Coax contacts	Gold plated contacts
O-rings	Nitrile
Locking sleeves	POM or stainless steel
Snap rings	Stainless steel AISI 302
Inline cable (2 ft, 60 cm)	PUR jacket cable with Mini-RG59 coax
Coax bulkhead leads (3.3 ft, 100 cm)	RG179 coax

### Face view (male)



### Nominal cable outside diameter (OD)

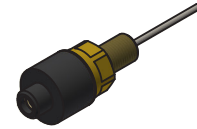
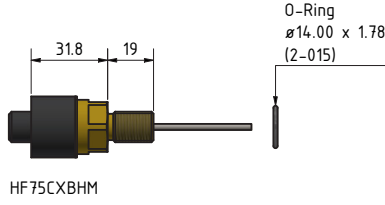
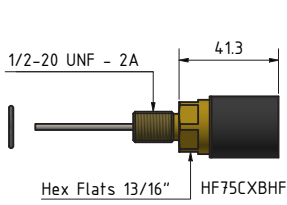
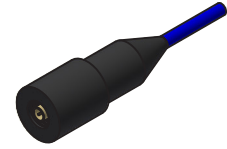
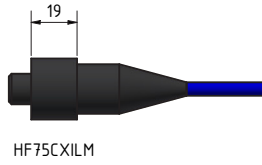
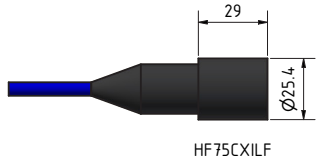
Mini-RG59 PUR cable 0.220", 5.59 mm

### Additional information

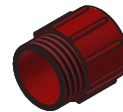
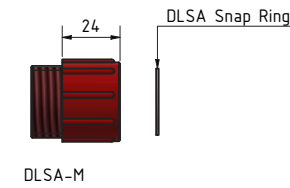
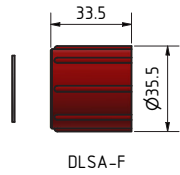
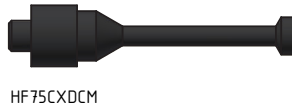
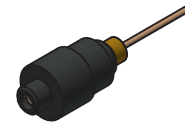
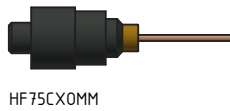
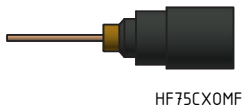
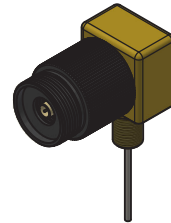
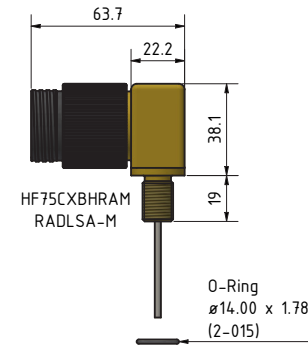
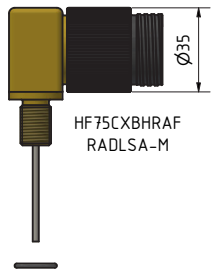
\*All frequency and attenuation values are based on a 10 meter cable assembly test including 2 bulkhead connectors (75 ohm).  
 BNC connector for RG179 coax leads use Amphenol 112133 or equivalent.  
 BNC connector for Mini-RG59 coax cable use Belden 1855ABHD3 or equivalent.

Recommended SMB termination for Coax, see pages 128-129

SubConn® Coax connectors are designed for dry mating only. The Coax series is not suitable for open-face pressure or waterblock applications. Locking sleeves are required. Avoid greasing the actual coax part. The minimum bending radius for inline cables is 100 mm.



Note:  
RA body are not available in PEEK.  
RADLSA-M locking sleeve in colour black only (female version not available)



### Drawing information

Dimensions in mm (1 mm = 0.03937 inch)  
Threads in inches (1 inch = 25.4 mm)