

2300

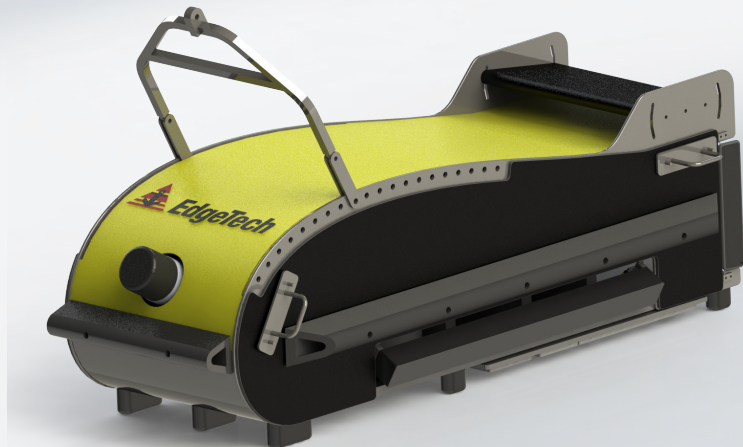
COMBINED SIDE SCAN SONAR, BATHYMETRY & SUB-BOTTOM PROFILING SYSTEM

FEATURES

- Fully integrated turnkey system
- Tri-frequency side scan sonar
- MPES Bathymetry option
- Enhanced sub-bottom profiling capabilities with multiple low frequency transducers and PVDF receiver
- Digital telemetry over single coaxial tow cable up to 6,000m
- Fiber optic cable supported for high bandwidth configurations
- Built-in heading, pitch and roll sensors

APPLICATIONS

- Archeological Surveys
- Geological/Geophysical Surveys
- Sediment Classification
- Cable and Pipeline Surveys
- Pre/Post Dredging Surveys
- Scour/Erosion Investigation



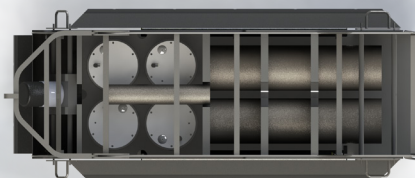
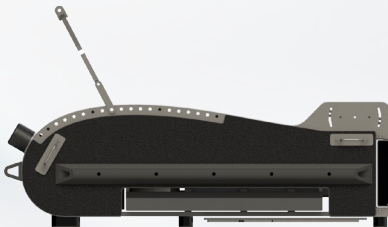
The new 2300 combines EdgeTech's highly successful line of side scan sonars, sub-bottom profilers and MPES bathymetry into one fully integrated system.

The new system builds on EdgeTech's proven sonar technology in a number of ways. The system is ideal for deep water combined sonar operations and provides enhancements to traditional systems. Utilizing EdgeTech's proven Full Spectrum® CHIRP technology to provide crisp, high resolution imagery, surveyors can choose to operate any two frequencies simultaneously from the tri-frequency system.

Sub-bottom profiler capabilities have been expanded on the new 2300 to include the ability to incorporate up to four low frequency transducers as part of EdgeTech's DW-106 (1-10kHz) deep penetration system. Coupled with that is the ability to utilize a large PVDF hydrophone array providing better sub-bottom receive sensitivity and directivity.

EdgeTech's MPES bathymetry is also available on the platform. The Multi Phase Echo Sounder (MPES) produces real-time, high resolution, three dimensional (3D) maps of the seafloor while providing co-registered simultaneous dual frequency side scan imagery.

Additional features include a remote head USBL beacon, optional Nexus Multiplexer, a rear magnetometer shackle mount, and adjustable trim panels.



For more information please visit EdgeTech.com

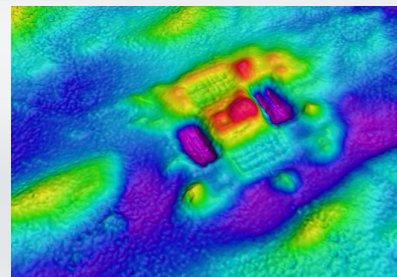
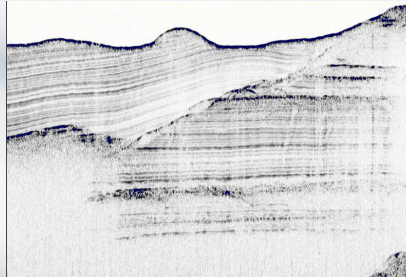
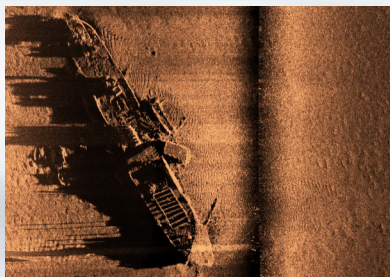
info@EdgeTech.com | USA 1.508.291.0057

2300

COMBINED SIDE SCAN SONAR, BATHYMETRY & SUB-BOTTOM PROFILING SYSTEM

KEY SPECIFICATIONS

SONAR SPECIFICATIONS	STANDARD		
Frequency	Choice of either 120/410/900 kHz or 230/550/900 kHz tri-frequency side scan sonar * Note: Tri-frequency configurations operate any 2 frequencies simultaneously on command		
Operating Range (meters/side)	120 kHz: 500m, 230 kHz: 230m, 410 kHz: 150m, 550 kHz: 120m, 900 kHz: 75m		
Horizontal Beam Width:	120 kHz: 1.5°, 230 kHz: 0.5°, 410 kHz: 0.4°, 550 kHz: 0.26°, 900 kHz: 0.2°		
Resolution Along Track	120 kHz: 5 m @ 200 m 230 kHz: 1.3 m @ 150 m 410 kHz: 0.6 m @ 100 m 550 kHz: 0.45 m @ 100 m 900 kHz: 18 cm @ 50 m		
Resolution Across Track	120 kHz: 8 cm, 230 kHz: 3 cm, 410 kHz: 2 cm, 550 kHz: 1.5 cm, 900 kHz: 1 cm		
Vertical Beam Width	50°		
Depression Angle	Tilted down 20°		
MPES BATHYMETRY			
Sonar Frequency	120 kHz	230 kHz	550 kHz
Beamwidths	1.5° x 1°	1° x 0.7°	1° x 0.5°
Max Sounding Depth below towfish	450 m	225 m	120 m
Max Swath Width	550 m	400 m	200 m
Sounding Patterns	Equidistant and Equiangular		
SUB-BOTTOM PROFILER	4 X DW 216	2 X DW 106	4 X DW 106
Frequency Band	2-16 kHz	1-10 kHz	1-10 kHz
Resolution	6 - 18 cm*	10 - 30 cm*	10 - 30 cm*
Penetration in coarse sand	7 m	15 m	18 m
Penetration in clay	95 m	150 m	180 m
TOWFISH			
Length	203 cm (80")		
Width	84 cm (33")		
Height	70 cm (27.5")		
Weight in Air	Up to 385 kg - Depending on SBP array		
Maximum Water Depth	2000 meters standard (3000 meters optional)		



For more information please visit EdgeTech.com

info@EdgeTech.com | USA 1.508.291.0057