

SubConn® Penetrator

Water-blocked Straight

Connector specifications

Voltage rating	300/600 V DC/AC rms (depends on cable)
Current rating	Depends on wire and conductor size
Insulation resistance	> 200 MΩ
Temperature rating (water)	- 4 to 60°C, - 25 to 140°F
Temperature rating (air)	- 40 to 60°C, - 40 to 140°F
Storage temperature rating	- 40 to 60°C, - 40 to 140°F
Qualified pressure tested	800 bar, 11,600 psi

Material specifications

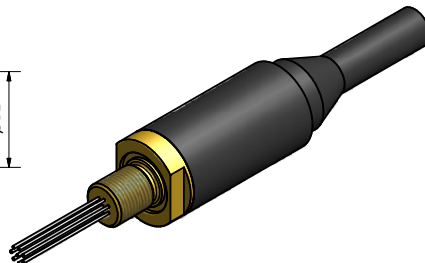
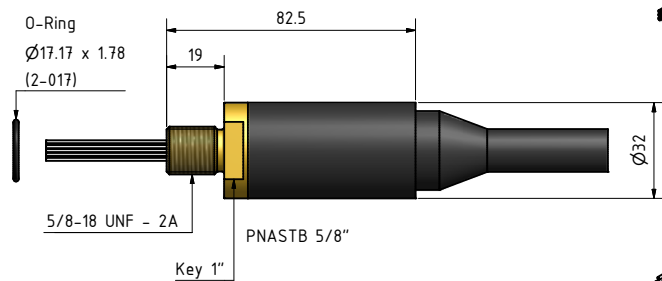
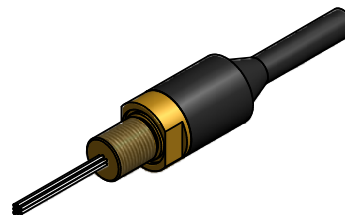
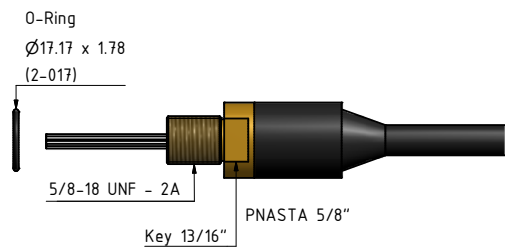
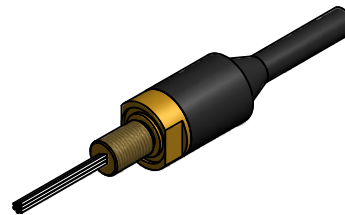
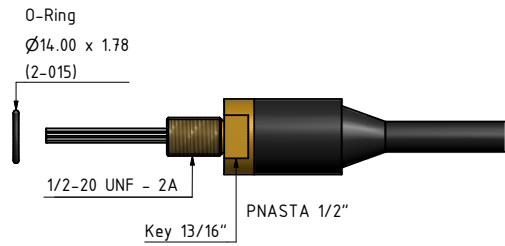
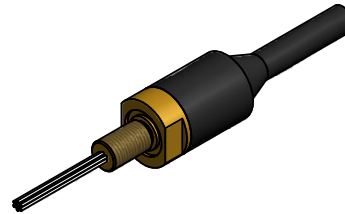
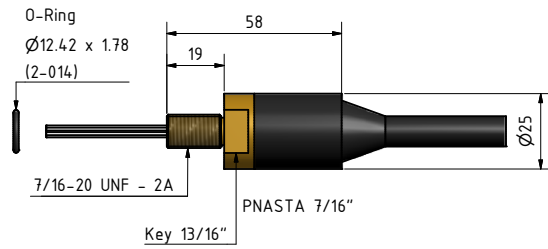
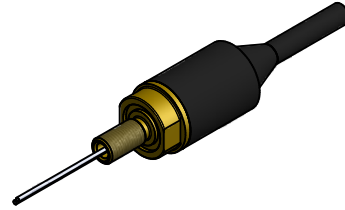
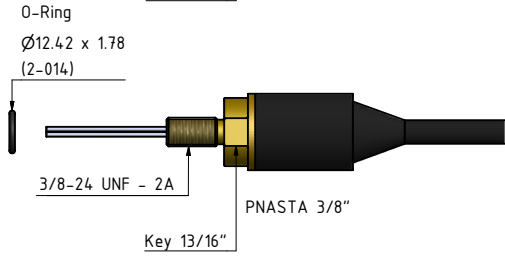
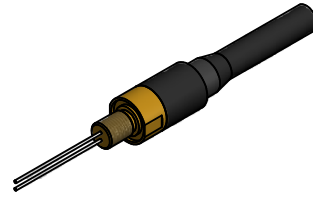
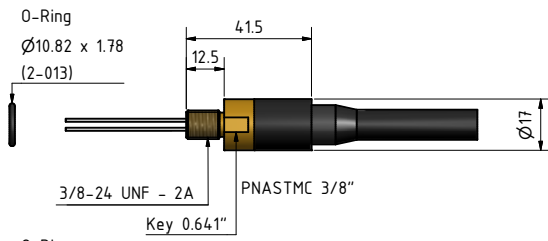
Penetrator body	Chloroprene rubber
Penetrator metal part	Brass, stainless steel
Wire and conductor size	18 AWG, 0.82 mm ² to 22 AWG, 0.33 mm ² (depends on wire quantity)
Penetrator wire leads (30 cm, 1 ft)	PTFE
Cable outside diameter	Depends on penetrator and cable type
O-rings	Nitrile
Inline cable length	Customer specified
Inline cable type	Customer specified (SubConn® cables only)

Cable colour code

Depends on corresponding SubConn® connector and cable type.

Additional information

These items are not kept in stock but can be ordered according to the type of cable that needs to be terminated.



Drawing information

Dimensions in mm (1 mm = 0.03937 inches)
Threads in inches (1 inch = 25.4 mm)