

# SubConn® Metal Shell 2000

## 2, 3, 4 contacts and Micro 10 and 12 contacts

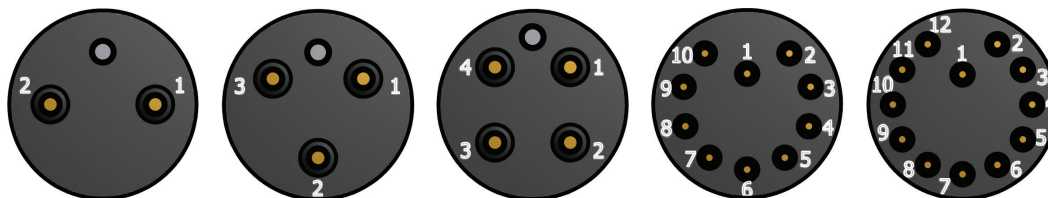
### Connector specifications

2, 3 and 4 contacts voltage rating	600 V DC/AC rms
10 and 12 contacts voltage rating	300 V DC/AC rms
2, 3 and 4 contacts current rating	10 A per contact (max 30 A per connector)
10 and 12 contacts current rating	5 A per contact (max 30 A per connector)
Insulation resistance	> 200 Mohm
Contact resistance	< 0.01 ohm
Wet matings	> 500 (open face rated)
Temperature rating (water)	- 4 to 60°C, 25 to 140°F
Temperature rating (air)	- 40 to 60°C, - 40 to 140°F
Storage temperature rating	- 40 to 60°C, - 40 to 140°F
Qualified pressure tested	800 bar, 11,600 psi

### Material specifications

Connector body	Chloroprene rubber
Connector housing	Stainless steel AISI 316 (other materials on request)
2, 3 and 4 contacts	Brass UNS - C36000
10 and 12 contacts	Female sockets in gold plated brass UNS - C36000
	Male pins in gold plated beryllium copper
Location pin	Stainless steel AISI 303
O-rings	Nitrile
Locking sleeves	POM or stainless steel
Snap rings	Stainless steel AISI 302
2, 3 and 4 contact bulkhead leads (1 ft, 30 cm)	18 AWG, 0.82 mm <sup>2</sup> white tagged PTFE
10 and 12 contact bulkhead leads (1 ft, 30 cm)	20 AWG, 0.52 mm <sup>2</sup> white tagged PTFE

### Face view (male)





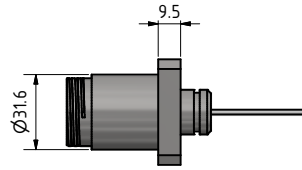
For more information  
see page 12/13-30/31

IL2F  
OM2F  
PBOF2F  
DC2F

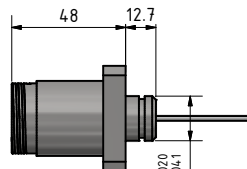


For more information  
see page 12/13-30/31

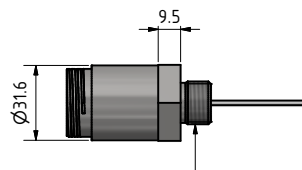
IL2M  
OM2M  
PBOF2M  
DC2M



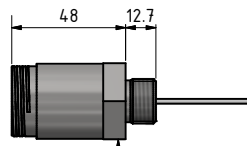
FCR2002F



FCR2002M



BCR2002F



BCR2002M

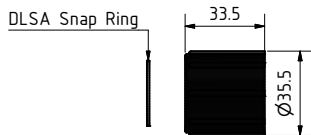
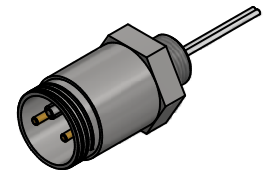
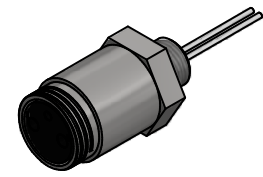
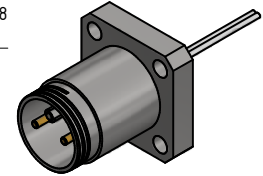
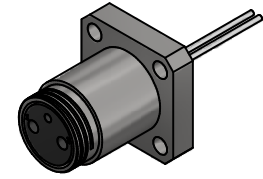
O-Ring  
ø22.22 x 2.62

O-Ring  
ø15.6 x 1.78  
(2-016)

O-Ring  
ø22.22 x 2.62

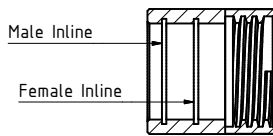
3/4-16 UNF - 2A

Hex Flats 32



LS2000

### Snap ring placement



With male inline connector - snap ring in outer groove

With female inline connector - snap ring in inner groove

### Drawing information

Dimensions in mm (1 mm = 0.03937 inch)  
Threads in inches (1 inch = 25.4 mm)